

# Preparing For Winter - Calf Pneumonia

Calf pneumonia costs the farming community £80 million per year. Prevention measures are the most sustainable and cost-effective way to manage the disease.



- Routine vaccination protects your calves from severe pneumonia outbreaks. As well as reducing severity of clinical signs and viral shedding, it saves your business money in the long term.
- Look out for the signs of calf pneumonia so you can act quickly: fever, depression, coughing, lack of appetite, discharge and salivation.
- Relax! A stressed calf means a higher risk of calf pneumonia. Plan the timing of stressful events to minimise the impact on your stock
- Feed intake and feed conversion are both linked to calf health. Make sure your calf feed plan is optimal, for the type of animal and the targeted weight gain.
- By implementing vaccinations and other prevention methods we can minimise the need for treatment, safely reducing antibiotic use on farm
- Optimum ventilation allows stale, moist air to be exchanged for fresh, clean air. Are your calf houses properly ventilated even on still autumn days?
- Mixing age groups increases the risk of calf pneumonia spreading. For more information on weaning, handling and other calf pneumonia prevention tips, please speak to one of our vets



[enquiries@arkvetcentre.co.uk](mailto:enquiries@arkvetcentre.co.uk)



## Ark Vet Centre

Your farm's health is in our hands.



### Autumn 22 Newsletter



Welcome to our Autumn newsletter.

In this issue we will be looking at fluke in sheep, weaning advice for beef farmers, a look back at some of our meetings this year and how to prepare for the cattle pneumonia season.

## What Has Been Happening?

It has been an interesting few months here at Ark Vet Centre.

We have been seeing lots of cases of lungworm, coccidiosis in calves, worming issues and have been busy doing tup MOTs so the tups are ready for tugging time.

We welcomed our two new vets, Mary Holmes and Katie Allen.

Mary joined us in July after graduating from Glasgow Vet School. She is originally from Duns in the Scottish Borders, her main interests lie with farm animal medicine although she also enjoys treating small and equine patients. In her spare time you can

find her exploring new walks with her dog Moose. She also plays the bagpipes and is hoping to join one of the local bands.

Katie joined us in August. She is originally from near Loch Lomond and is keen to work with small and large animals with a particular interest in farm practice due to her farming background. Outside works, Katie enjoys walking with her dog Maisie and socialising through young farmers.



## Farmer Meetings

We have had some great, informative meetings so far in 2022.



In June we were joined by Ben Strugnell from Farm Post Mortems Ltd. Ben took us through the post mortem procedure which led to a great discussion on the importance of post mortems and what they can tell us and how we can learn from them. We are lucky to have the SRUC so close to us to assist us with this and we would encourage you to contact us so we can

help or take your deadstock direct to the lab.

In August we held an on farm meeting and were joined by Fiona Lovatt from Flock Health Ltd and we discussed 'Sheep Fertility'

We covered all aspects of sheep fertility including ewe nutrition, body condition scoring and



checking the tups and how we can improve these on farm. If you have any ideas for topics for future meetings please let us know and we will do our best to help.

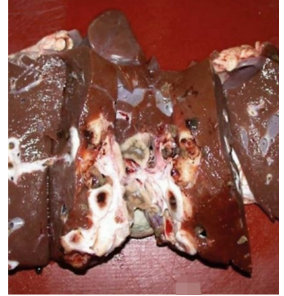


Remember to like our Ark Vet Centre – Farm Facebook page to keep updated on meetings, Information and all things farm



## Four Elements Of Liver Fluke Control

- 1) Pasture protection ~ to prevent liver fluke eggs reaching the pasture when snails are active
- 2) Pasture management ~ to reduce snail habitats and therefore reduce snail numbers
- 3) Grazing management to avoid grazing high risk pastures with susceptible animals at high risk times of year
- 4) Strategic treatments for at risk animals ~ controlling the right stage of liver fluke at the right time, using the right product



**\*\*Please contact us if you need any advice on a fluke strategy for your farm\*\***

## Top Tips For Weaning Beef Calves



Make sure they are heavy and eating enough before they are weaned.

Ideally get a full course of pneumonia vaccine into them before housing

Consider using 'Quiet Wean Nose Tags' which gradually breaks the cow calf bond over

just a few days. Easy to fit, reusable nose tags restrict the calves ability to suckle from their mother still allowing the pair to remain in contact with each other which can reduce stress and outbreaks of pneumonia.

Also, make sure they are dosed for lungworm pre housing to minimise the risk of pneumonia.