



Ark Vet Centre

FARM NEWSLETTER SPRING 2025

RCVS | SETTING
VETERINARY
STANDARDS

NEMATODIRUS UPDATE— SOUTH WEST SCOTLAND

We're keeping our eyes peeled for reports of *Nematodirus battus* affecting lambs across South West Scotland, with the region currently sitting at a **high** level. SRUC vets have already confirmed several cases and conditions are right for more outbreaks.



Typically, *Nematodirus* peaks in **late May to early June** but with the prolonged cold spell this spring, there's a risk of a sharp hatch now that temperatures have started to rise. This means young lambs grazing affected pastures may be exposed to large numbers of infectious larvae all at once — a dangerous combination.

If you had issues with *Nematodirus* last year, be extra cautious with those fields this season. It's advisable to avoid grazing young lambs (particularly those 6–12 weeks old) on high-risk pastures if at all possible.

A reminder that **faecal egg counts won't help here** — the damage is caused by immature larvae, so clinical signs may appear before any eggs are shed. Keep an eye out for sudden-onset diarrhoea, dehydration, and poor growth in lambs.

To help monitor the risk, the **SCOPS Nematodirus Forecast** is updated daily and shows local risk levels across the UK. You can find it at www.scops.org.uk

Key actions:

- Check the SCOPS forecast for your area.
- Avoid grazing young lambs on high-risk fields, especially those used by lambs last spring.

***Speak to us about timing treatments if needed -**

Early Intervention Is Key*

SPRING HAS ARRIVED!

In this spring issue we have an update on *Nematodirus*, bull fertility, subsidised blood testing for sheep and a beef and sheep farmer bus trip to Northsheep.

Please let us know if you have any questions or suggestions for further topics!

HAMPER WINNER AND BUS TRIP



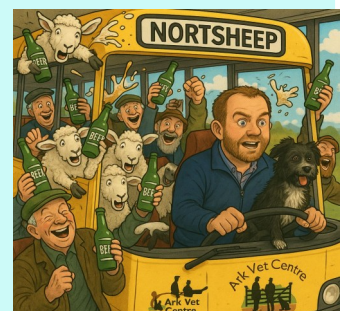
Last month we sent a survey out for dairy farmers for them to score pain, the cows not their own!

All entrants were put into a prize draw to win a hamper and the

lucky winner was Mark Stewart, Small-holmburn. Thanks to Ceva Animal Health for helping us run this campaign.

DAY TRIP TO NORTH SHEEP 4TH JUNE

This year we are putting on a free bus to North Sheep 2025 for our Beef and Sheep Farmers. Bus will leave Lockerbie at 8am and leave Northsheep near Penrith at 5pm, with refreshments served. Please contact us at the practice to book your space.





BULL FERTILITY TESTING

With spring calving season in full swing attention will soon be turning to next years breeding season. As many

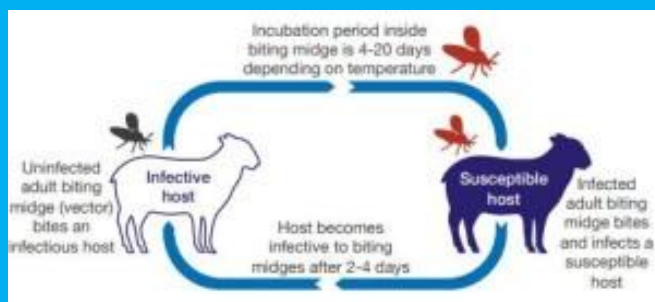
will be aware the new Scottish Suckled Calf Payment scheme requires the dam to have a calving interval within 410 days to be eligible. With this in mind it is essential that you are sure that your stock bulls are fit and sound to perform the job they are intended for.

At Ark Vets we provide fertility testing for bulls where we perform a clinical exam to detect for any abnormalities affecting the reproductive tract along with a detailed evaluation of their semen. We have found that up to 20% of bulls fail to meet the minimum standards required. Identification of "problem" bulls early can help overt any missed time for getting cows back in calf and help improve your herds profitability.

Funding is still available from the Scottish Government via 'Preparing for Sustainable Farming – Animal Health and Welfare Intervention' for bull fertility testing.

Please get in touch with the practice to discuss how we can help.

Although we have had no cases in Scotland. Bluetongue virus (BTV) is spread by midges and is notifiable. Symptoms of BTV include abortion, crusting of the nose, salivation and lameness



Remember to like and follow our Ark Vet Centre– Farm Facebook and Instagram Page for information, meetings and all things Farm!



SUBSIDISED BLOOD TESTING FOR TOXOPLASMOSIS & ENZOOTIC ABORTION IN SHEEP – Funded by MSD

We're pleased to offer a subsidised testing scheme, funded by



MSD Animal Health, to help identify two major causes of abortion in sheep: Toxoplasmosis and Enzootic Abortion (EAE).

Reproductive losses can significantly impact flock productivity, and identifying the cause is key to preventing future problems. Thanks to this initiative, we can blood sample 6–8 ewes per flock, focusing on:

- Ewes that have aborted
- Unvaccinated ewes
- Barren ewes
- Ewes that have produced weak or stillborn lambs

This is a great opportunity to investigate the presence of these infectious agents at a reduced cost – and to plan ahead for the next breeding season.

The scheme runs until the end of June, so please get in touch soon if you'd like to take advantage of the offer. Early detection and vaccination are key steps in reducing future losses.

If you've noticed any concerns in your flock this season, now is the time to act.

